

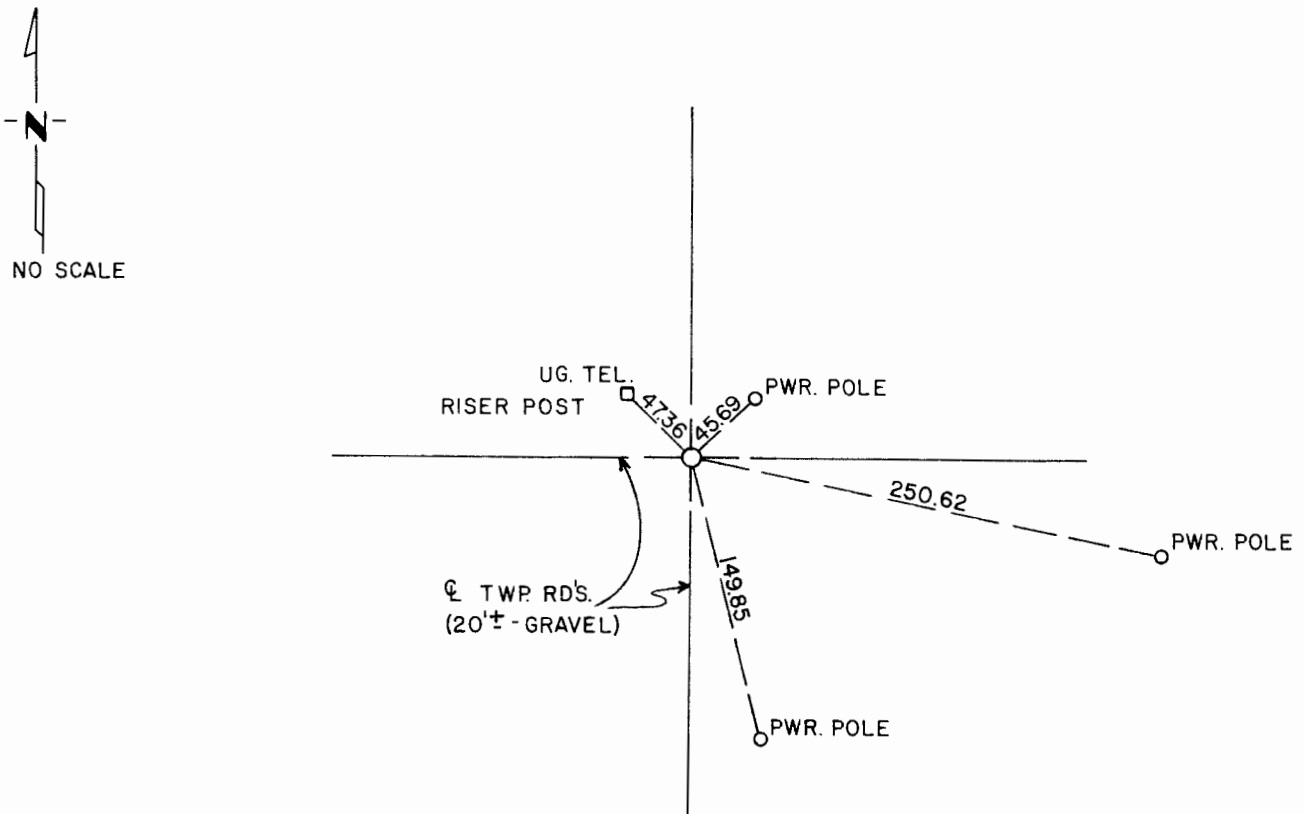
# CERTIFICATE OF LOCATION OF GOVERNMENT CORNER

NORTHWEST Corner of Section 3, Township 105 N., Range 42 W., 5th P.M.  
 STATE OF MINNESOTA, County of MURRAY

At the corner location shown on the sketch:

- On 4/4/78 found an old iron casting and rotted wooden stake  
 placed DATE 1,5'-2,0' deep at township road centerline intersection-  
placed 1/2" iron pipe with "Martin R.L.S. 12967" yellow plastic cap in  
 left monument as found,  lowered monument,  removed monument (explain)  
**center hole in casting to raise corner to 0.5' below grade.**  
 On \_\_\_\_\_ placed a \_\_\_\_\_  
 DATE \_\_\_\_\_

### SKETCH OF REFERENCE TIES



Statement of evidence relative to this corner location is on back of page.

I hereby certify that this document and the data contained herein was prepared by me or under my direct supervision.

*Mary S. Mart* 6/19/78  
 SIGNATURE DATE

Registration No. 12967

- Land Surveyor,  Professional Engineer  
 County Surveyor,  County Engineer

OFFICE OF THE REGISTER OF DEEDS  
 County of MURRAY

I hereby certify that this document was filed in the Reg. of Deeds office at 8:30 .M. on the 7th day of August A.D., 19 81

Register of Deeds *W.W. Ohme*

By \_\_\_\_\_, Deputy

DOCUMENT NO. 164260

Statement of Evidence:

G.L.O. - Survey by J. W. Myers; completed between June 22, 1861, and Sept., 1861; "deposited charcoal, made mound of earth and sod with trench and pits as per instructions".

Subsequent Resurvey - Murray County Highway Engineer - "Surveyor's Record Book"; Survey by J. W. Woolstencroft, Murray County Surveyor; November 10, 1910; type of corner reset or found not described; iron casting and wooden stake found match township road centerline intersection; distances to nearest government corners south and east are within 2' of G.L.O. chainage; accepted iron casting and wooden stake as perpetuation of original government corner.

164260

State of Minnesota  
County of Murray

I hereby certify that the within instrument  
was filed in this office for record on the

7th day of Aug. A.D. 19 81,

at 8:30 o'clock A.M., and was duly re-

corded as Microfilm Document No. 164 260

Willard W. Ohme  
County Recorder